

We estimate
there
are

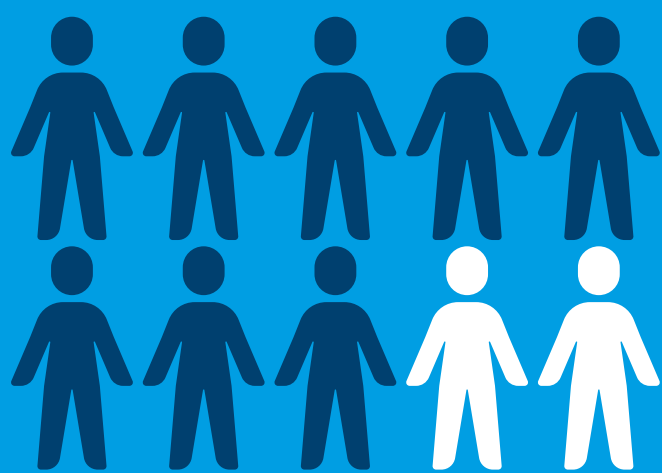
140,633

people with
MS in the UK

using data provided by frontline MS nurses

MS specialist nursing in the UK 2021:

key points from the MS Trust
nurse mapping survey



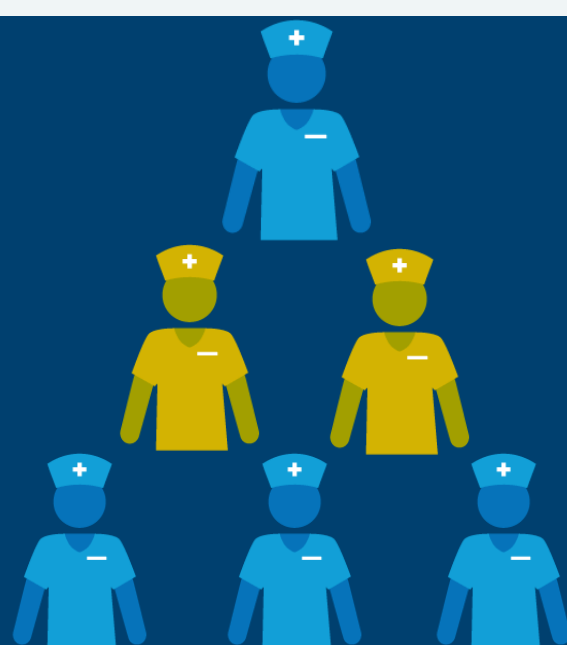
8 IN 10

people live in areas
with unsustainable
caseloads

We need

50%

more MS nurses to
make caseloads
sustainable



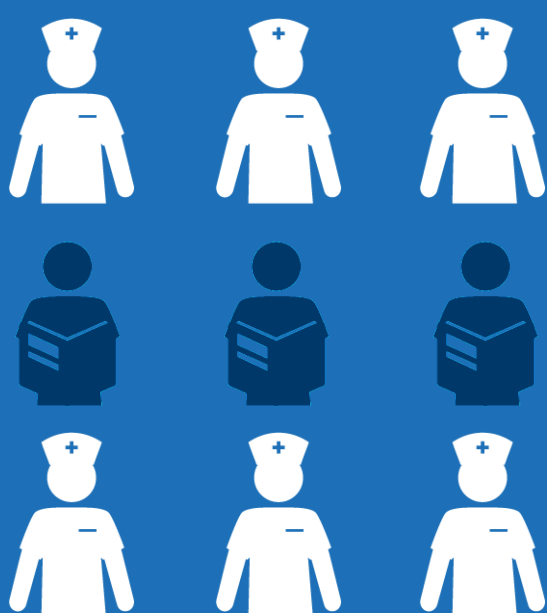
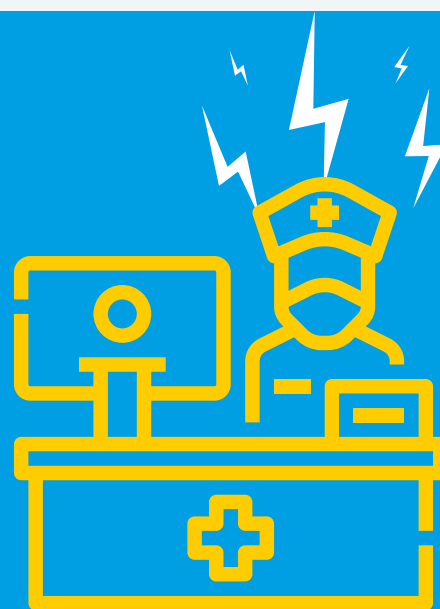
Only

1 in 3

teams provide home
visits

1 in 5

MS nurse teams have
no administrative
support



1 IN 3

MS nurses are planning
to retire in the next 5
years